



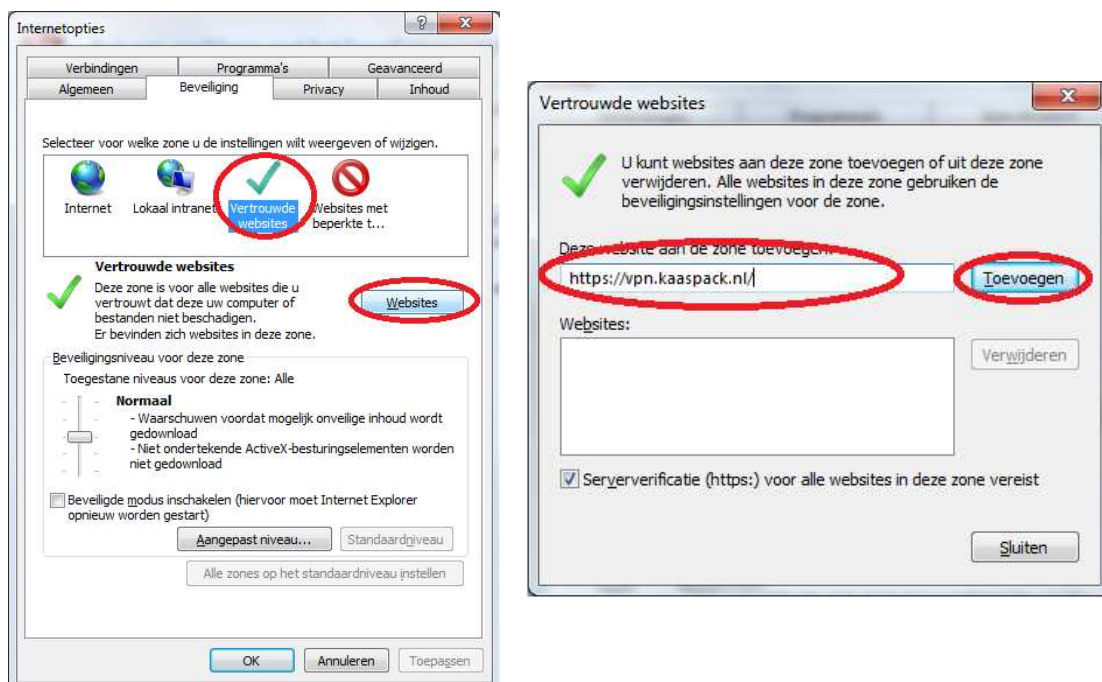
Kaas-Pack SSL VPN manual

System requirements

- Microsoft Windows XP/Vista/7 operating system
- Microsoft Internet Explorer 6 or higher
- Active Internet connection
- The user needs local administrator rights for NetExtender/VPN.
- Java 1.5 or higher is required for VNC or RDP connection,

Starting the SSL VPN connection

Before you connect to the SSL Portal, the Portal site should be added as a trusted site in Internet Explorer. For this purpose, start Internet Explorer and then go to the Tools -> Internet Options -> Security Tab -> Click on Trusted Sites and then click the "Sites" button. Next, add <https://vpn.kaaspack.nl> to the list of trusted sites.





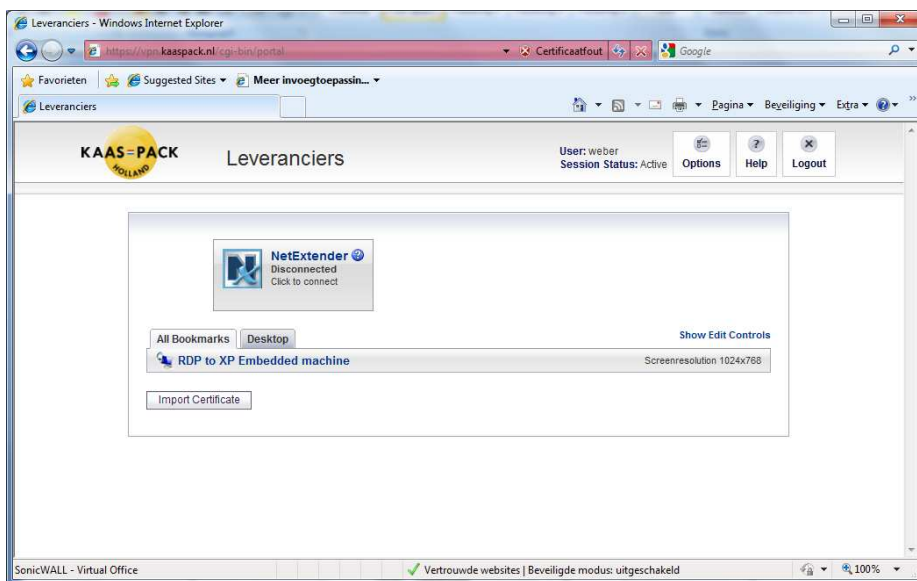
Starting the SSL VPN connection

YOU MAY RECEIVE ONE OR MORE CERTIFICATE NOTIFICATIONS. IF THIS HAPPENS ALWAYS CLICK ON [CONTINUE TO THIS WEBSITE](#)

1. Go to www.kaaspack.nl and select Login on the navigation menu. Next click on the Leverancier (Providers) link. You will be redirected to the VPN portal site.
2. On the Login page, you can login using your login information.

A screenshot of the KAAS-PACK Leveranciers login page. The page has a header with the KAAS-PACK logo and the title 'Leveranciers'. Below the header is a large white box containing a login form. The form has three input fields: 'Username:', 'Password:', and 'Domain:'. The 'Domain:' field is a dropdown menu with 'Leveranciers' selected. Below the input fields is a 'Login' button. The background of the form area features a decorative wavy pattern.

3. After logging in, you gain access to the Portal site. Using Bookmarks you can start an RDP connection to a host computer or upload files, for instance.



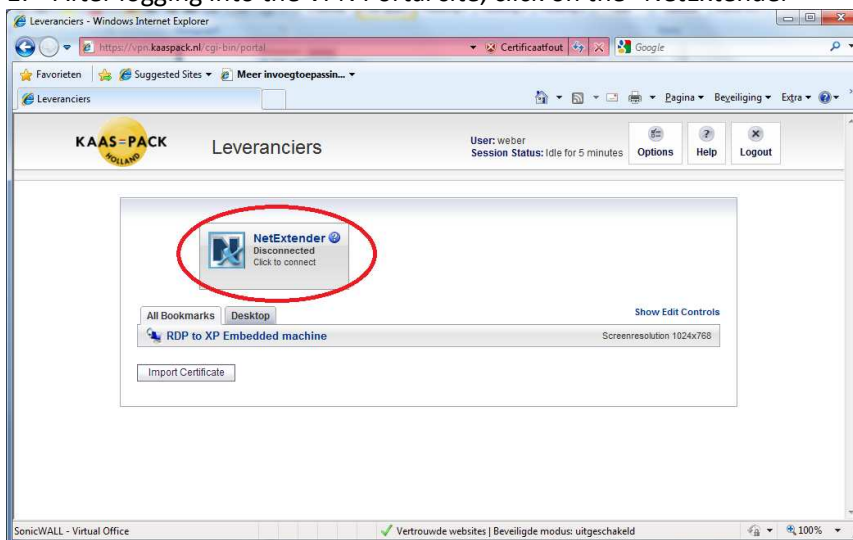


NetExtender

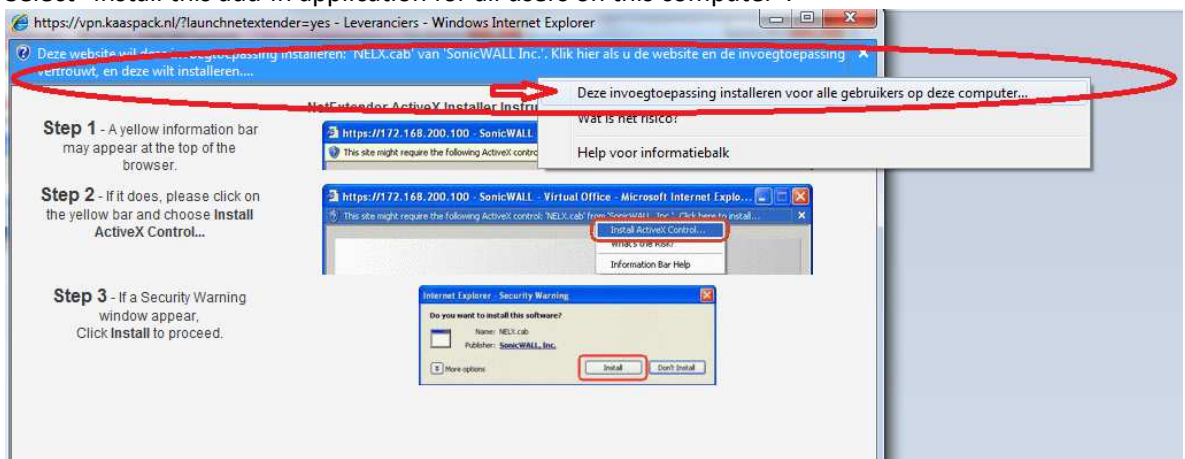
The NetExtender allows you to gain direct access to the network and to your Kaas-Pack-managed machines.

Starting the NetExtender:

1. After logging into the VPN Portal site, click on the "NetExtender"



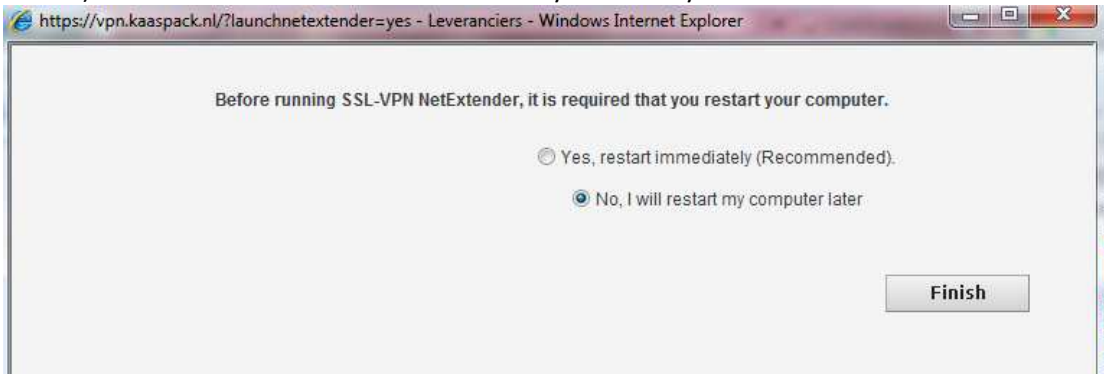
2. When you start NetExtender for the first time, the ActiveX component must be installed on your PC. Internet Explorer will give you a notification to this end at the top of your browser window. Select "Install this add-in application for all users on this computer".



DURING THE INSTALLATION OF THE ACTIVEX COMPONENT, YOUR COMPUTER MAY REQUEST ANOTHER CONFIRMATION. ALWAYS CLICK ON YES OR CONTINUE IN SUCH CASES.



After the installation of the ActiveX component the PC may need to be restarted (notification below.) A restart is recommended but not always necessary.



After installing the ActiveX, restart NetExtender

3. If the ActiveX component has been correctly installed, a window containing the VPN details will be displayed after some time (see image). You are now connected to the Kaas-Ppack network and can reach your managed machines.

